

Stop & Stay

Stop & Stay Gas Springs enable multi-position holding of counter balanced weight over the entire stroke of the Gas Spring. Based upon proven standard ranges of Gas Spring technology, they are easy to fit with simple adjustment to determine the correct level of support.

Once fitted, fingertip control allows movement to any position required. The lock nut (Friction hold device) is adjusted to suit the application's weight (about a half turn), thereby applying a "Stick-slip" friction to the piston rod

Benefits


- **Multi position holding of counterbalanced weights**
- **Simple adjustment to determine correct setting**
- **Finger Tip control**
- **Custom Design, sized to your application**
- **Custom force setting or adjust-yourself option**
- **Safe to use and operate**

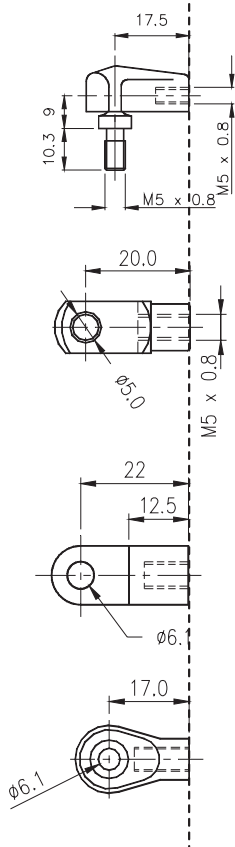
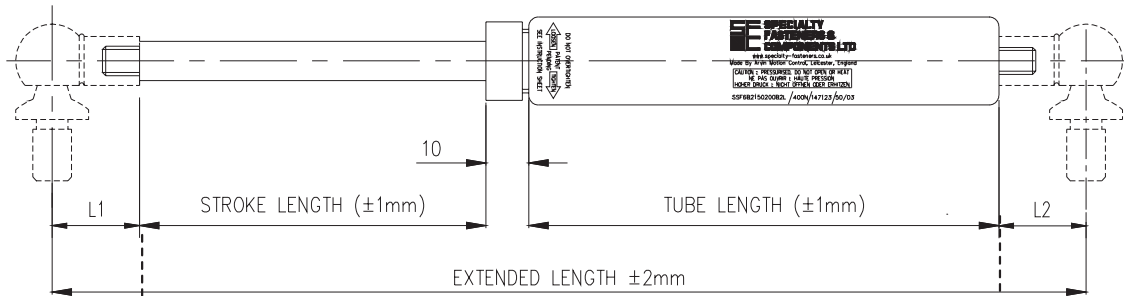
Together, we can select the most appropriate Gas Spring for your application, and provide fixed force or Vari-Lift prototypes quickly for testing on your application.

Stop & Stay Gas springs are ideal for a wide variety of applications such as sun beds, printer canopies, monitor arms, acoustic hoods, delicatessen counters and many more.

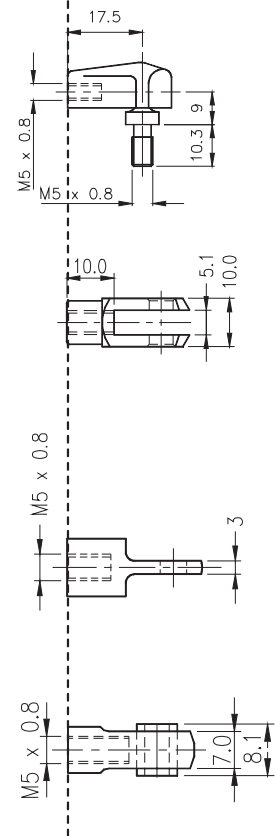
In the example shown of a sun bed, the Gas Spring force and the friction device is preset to carry the weight of the top canopy in the normal manner. This allows the user of the sun bed to raise, lower and position the top canopy in any position required effortlessly and in quick time




Fixed Force - Additional Friction Control. 6-15 Gas Spring	
Approximate Lid Weight	Up to 10Kg
Piston Rod	ø 6 mm Nitrided Steel
Cylinder	ø 15 mm Steel Black Powder Coated
End Connectors	Nylon & Steel options

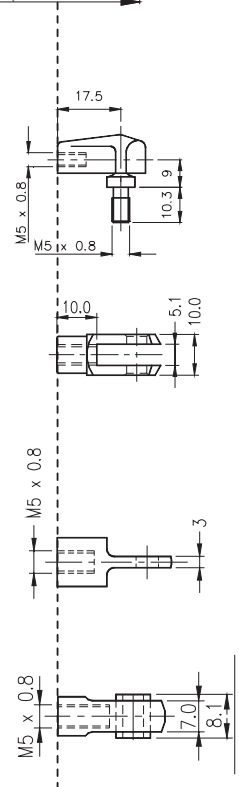
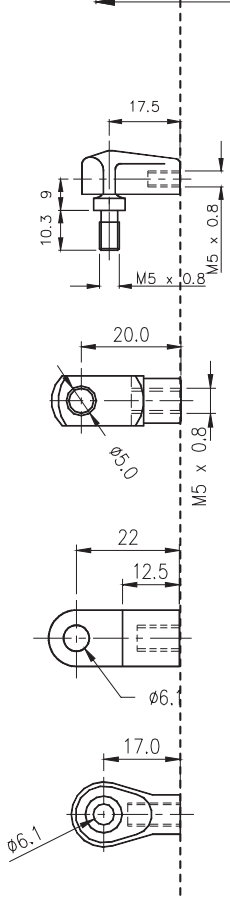
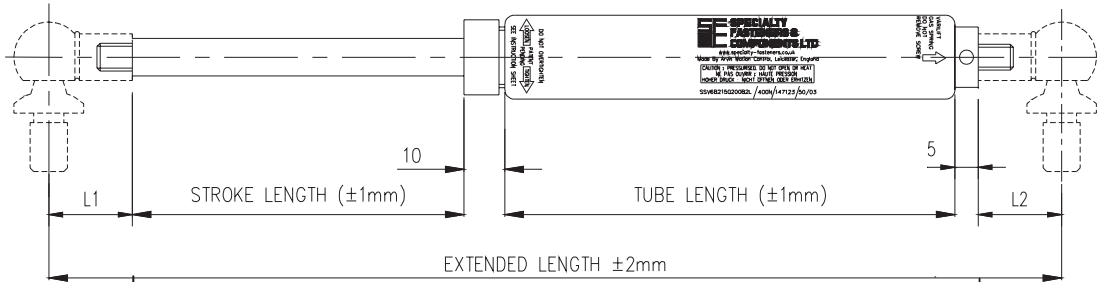


An Extensive Range of Sizes and Forces
Standard Stroke: (In 5mm Increments) 60mm to 200mm
Shortest Tube available for chosen stroke length: Tube Length = Stroke + 30mm
Standard Tube: (In 1mm increments) 90mm to 230mm.
Extended Length: Stroke + Tube + 10mm (friction device) + L1 + L2.
Force Range: (in 10 N Increments) 50N to 400N - (11 to 90lbs)
Standard Thread: M5 x 0.8
Also available in Variable Force,

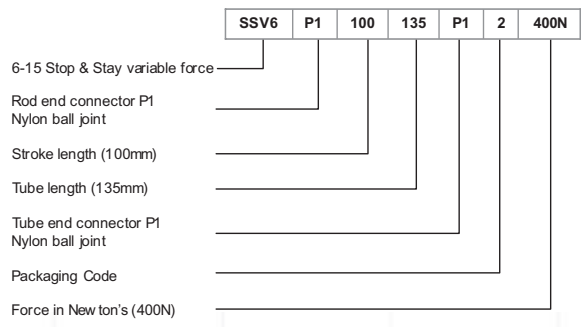



	SSF6	P1	100	135	P1	2	200N
6-15 Stop & Stay fixed force							
Rod end connector P1 Nylon ball joint							
Stroke length (100mm)							
Tube length (135mm)							
Tube end connector P1 Nylon ball joint							
Packaging Code							
Force in New ton's (200N)							

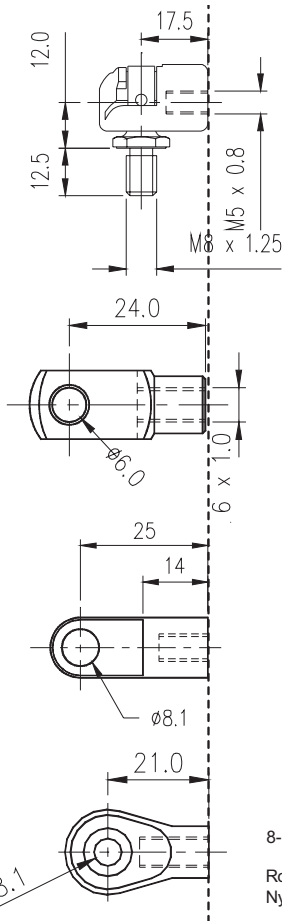
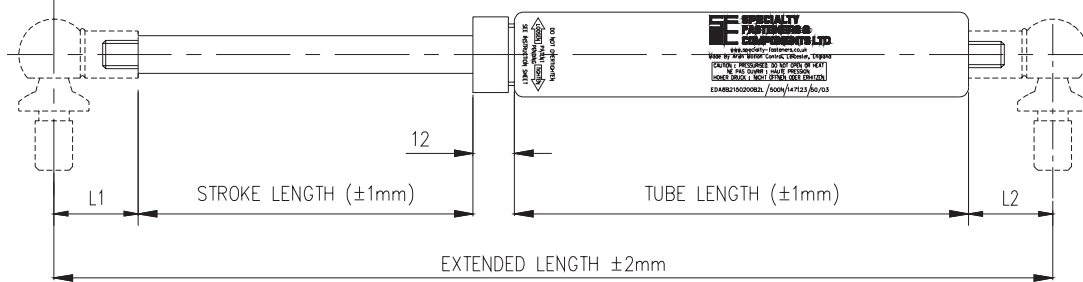
Variable Force - Additional Friction Control. 6-15 Gas Spring	
Approximate Lid Weight	Up to 10Kg
Piston Rod	ø 6 mm Nitrided Steel
Cylinder	ø 15 mm Steel Black Powder Coated
End Connectors	Nylon & Steel options



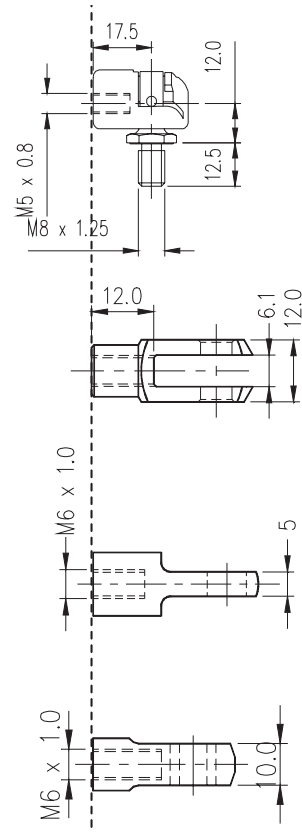
An Extensive Range of Sizes and Forces
Standard Stroke: (In 5mm Increments) 60mm to 200mm
Shortest Tube available for chosen stroke length: Tube Length = Stroke + 30mm
Standard Tube: (In 1mm increments) 90mm to 230mm
Extended Length: Stroke + Tube + 5mm (Valve) + 10mm (friction device) + L1 + L2.
Force Range: Supplied charged to max force 400N . Force can be reduced through valve. (See Vari-Lift Instruction Section)
Standard Thread: M5 x 0.8
Also available in Fixed Force version




Fixed Force - Additional Friction Control. 8-18 Gas Spring	
Approximate Lid Weight	10Kg to 40Kg
Piston Rod	ø 8 mm Nitrided Steel
Cylinder	ø 18 mm Steel Black Powder Coated
End Connectors	Nylon, Steel & Zinc options

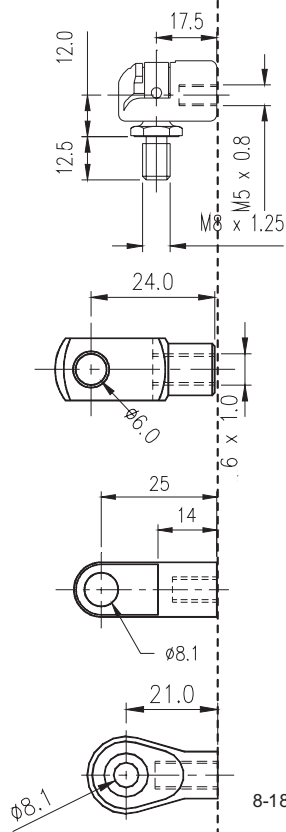
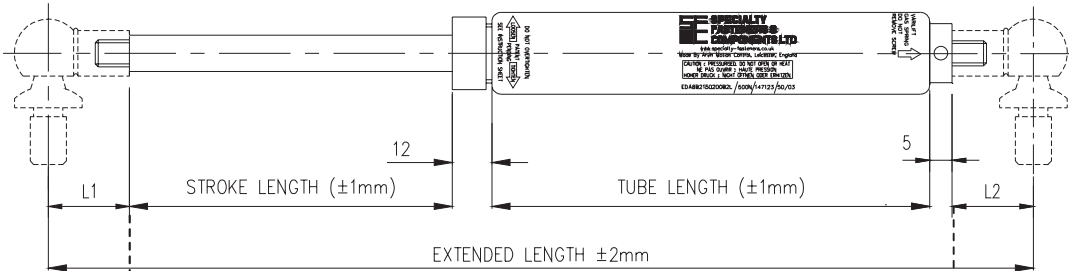


An Extensive Range of Sizes and Forces
Standard Stroke: (In 5mm Increments) 60mm to 300mm
Shortest Tube available for chosen stroke length: Tube = Stroke + 45mm
Standard Tube: (In 1mm increments) 105mm to 345mm
Extended Length: Stroke + Tube + 12mm (friction device) + L1 + L2.
Force Range: (in 10 N Increments) 100N to 650N (22-146 lbs)
Standard Thread: M6 x 1.0
Also available in Variable Force

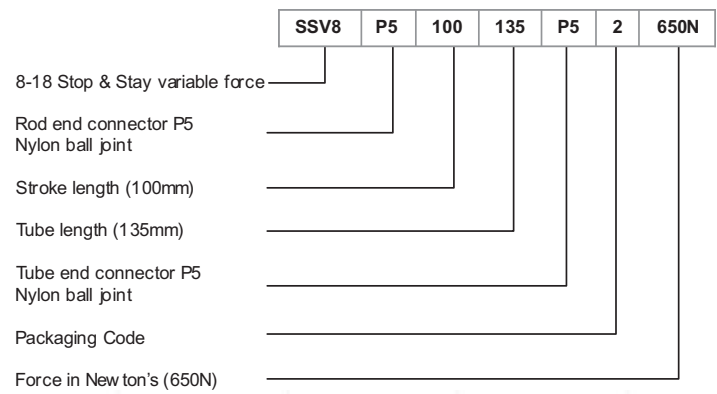
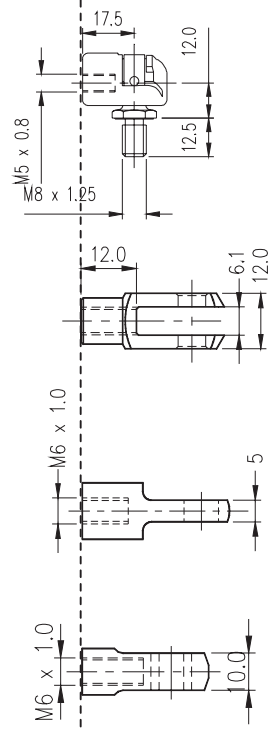


	SSF8	P5	100	135	P5	2	500N
8-18 Stop & Stay fixed force	---	---	---	---	---	---	---
Rod end connector P5 Nylon ball joint	---	---	---	---	---	---	---
Stroke length (100mm)	---	---	---	---	---	---	---
Tube length (135mm)	---	---	---	---	---	---	---
Tube end connector P5 Nylon ball joint	---	---	---	---	---	---	---
Packaging Code	---	---	---	---	---	---	---
Force in New ton's (500N)	---	---	---	---	---	---	---

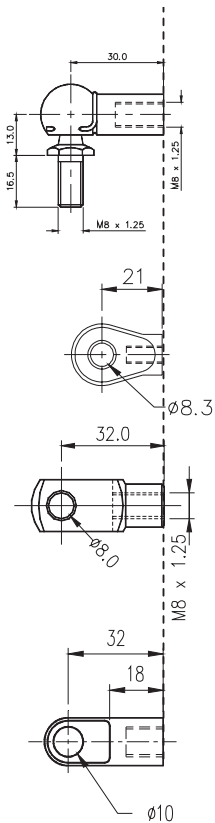
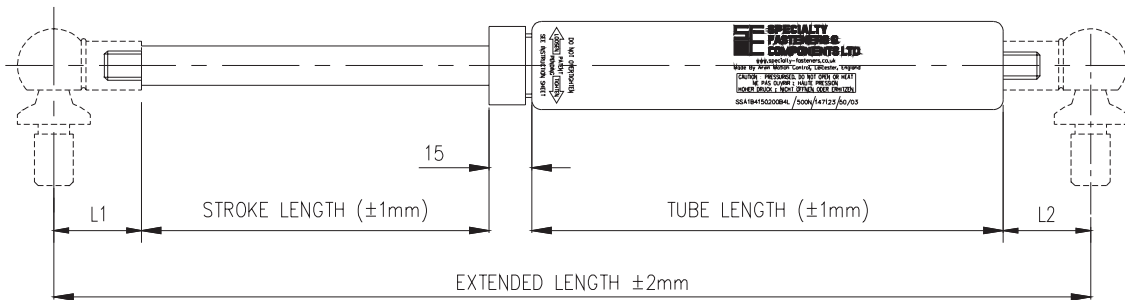
Variable Force - Additional Friction Control. 8-18 Gas Spring	
Approximate Lid Weight	10Kg to 40Kg
Piston Rod	ø 8 mm Nitrided Steel
Cylinder	ø 18 mm Steel Black Powder Coated
End Connectors	Nylon, Steel & Zinc options



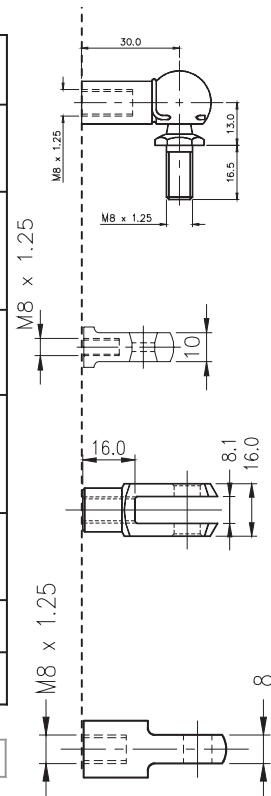
An Extensive Range of Sizes and Forces
Standard Stroke: (In 5mm Increments) 60mm to 300mm
Shortest Tube available for chosen stroke length: Tube = Stroke + 45mm
Standard Tube: (In 1mm increments) 105mm to 345mm
Extended Length: Stroke + Tube + valve (5mm) + 12mm (friction device) + L1 + L2.
Force Range: Supplied charged to max force 650N . Force can be reduced through valve. (See Vari-Lift Instruction Section)
Standard Thread: M6 x 1.0
Also available in Fixed Force Version




Fixed Force - Additional Friction Control. 10-23 Gas Spring	
Approximate Lid Weight	40Kg to 150Kg
Piston Rod	ø 10 mm Nitrided Steel
Cylinder	ø 23 mm Steel Black Powder Coated
End Connectors	Steel & Zinc options

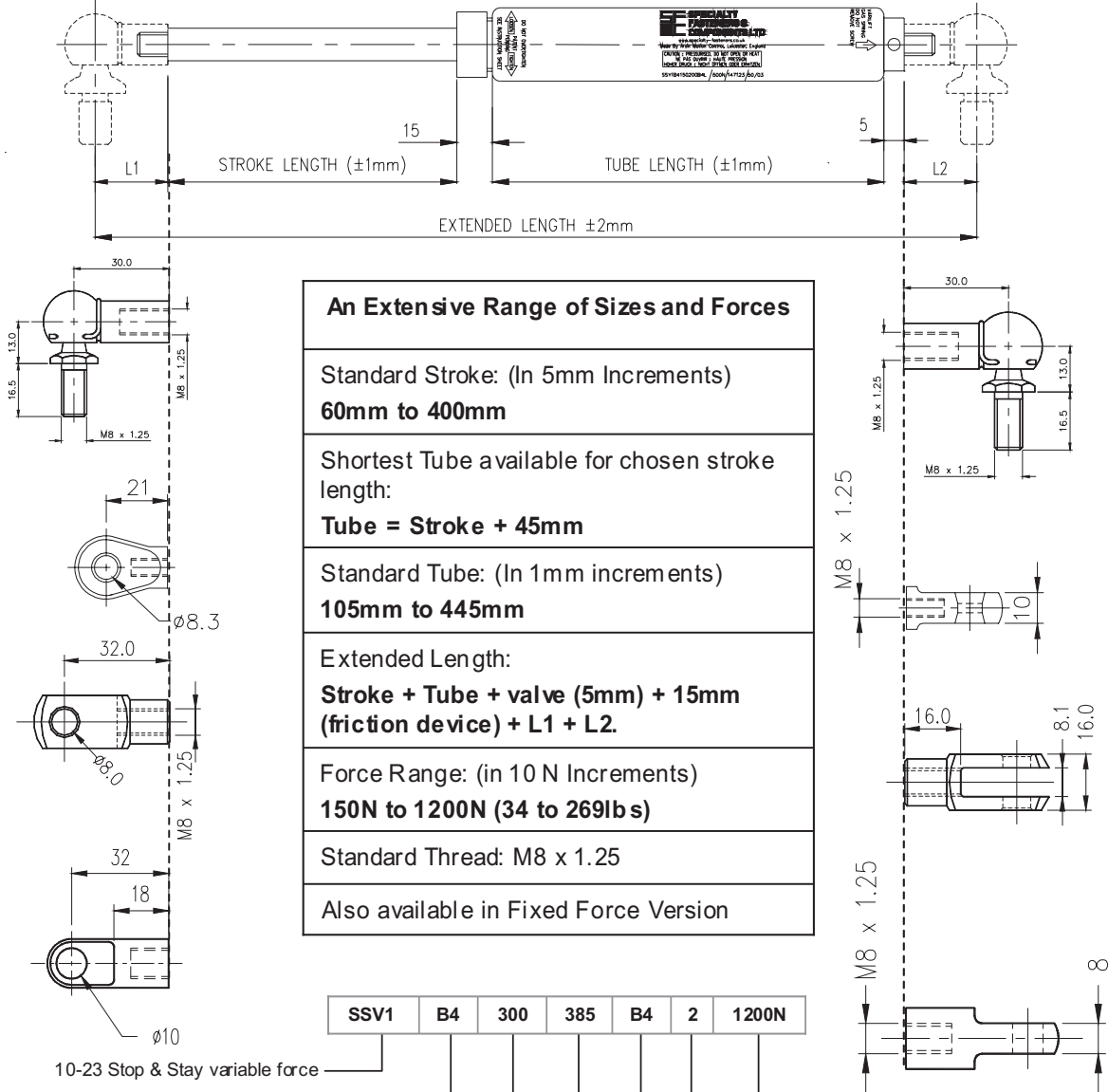


An Extensive Range of Sizes and Forces
Standard Stroke: (In 5mm Increments) 60mm to 400mm
Shortest Tube available for chosen stroke length: Tube = Stroke + 45mm
Standard Tube: (In 1mm increments) 105mm to 445mm
Extended Length: Stroke + Tube + 15mm (friction device) + L1 + L2.
Force Range: (in 10 N Increments) 150N to 1200N (34 to 269lbs)
Standard Thread: M8 x 1.25
Also available in Variable Force Version



	SSF1	B4	300	385	B4	2	950N
10-23 Stop & Stay fixed force	_____	_____	_____	_____	_____	_____	_____
Rod end connector B4 Steel ball joint	_____	_____	_____	_____	_____	_____	_____
Stroke length (300mm)	_____	_____	_____	_____	_____	_____	_____
Tube length (385mm)	_____	_____	_____	_____	_____	_____	_____
Tube end connector B4 Steel ball joint	_____	_____	_____	_____	_____	_____	_____
Packaging Code	_____	_____	_____	_____	_____	_____	_____
Force in Newton's (950N)	_____	_____	_____	_____	_____	_____	_____

Variable Force - Additional Friction Control. 10-23 Gas Spring	
Approximate Lid Weight	40Kg to 150Kg
Piston Rod	∅ 10 mm Nitrided Steel
Cylinder	∅ 23 mm Steel Black Powder Coated
End Connectors	Steel & Zinc options



An Extensive Range of Sizes and Forces
Standard Stroke: (In 5mm Increments) 60mm to 400mm
Shortest Tube available for chosen stroke length: Tube = Stroke + 45mm
Standard Tube: (In 1mm increments) 105mm to 445mm
Extended Length: Stroke + Tube + valve (5mm) + 15mm (friction device) + L1 + L2.
Force Range: (in 10 N Increments) 150N to 1200N (34 to 269lbs)
Standard Thread: M8 x 1.25
Also available in Fixed Force Version

